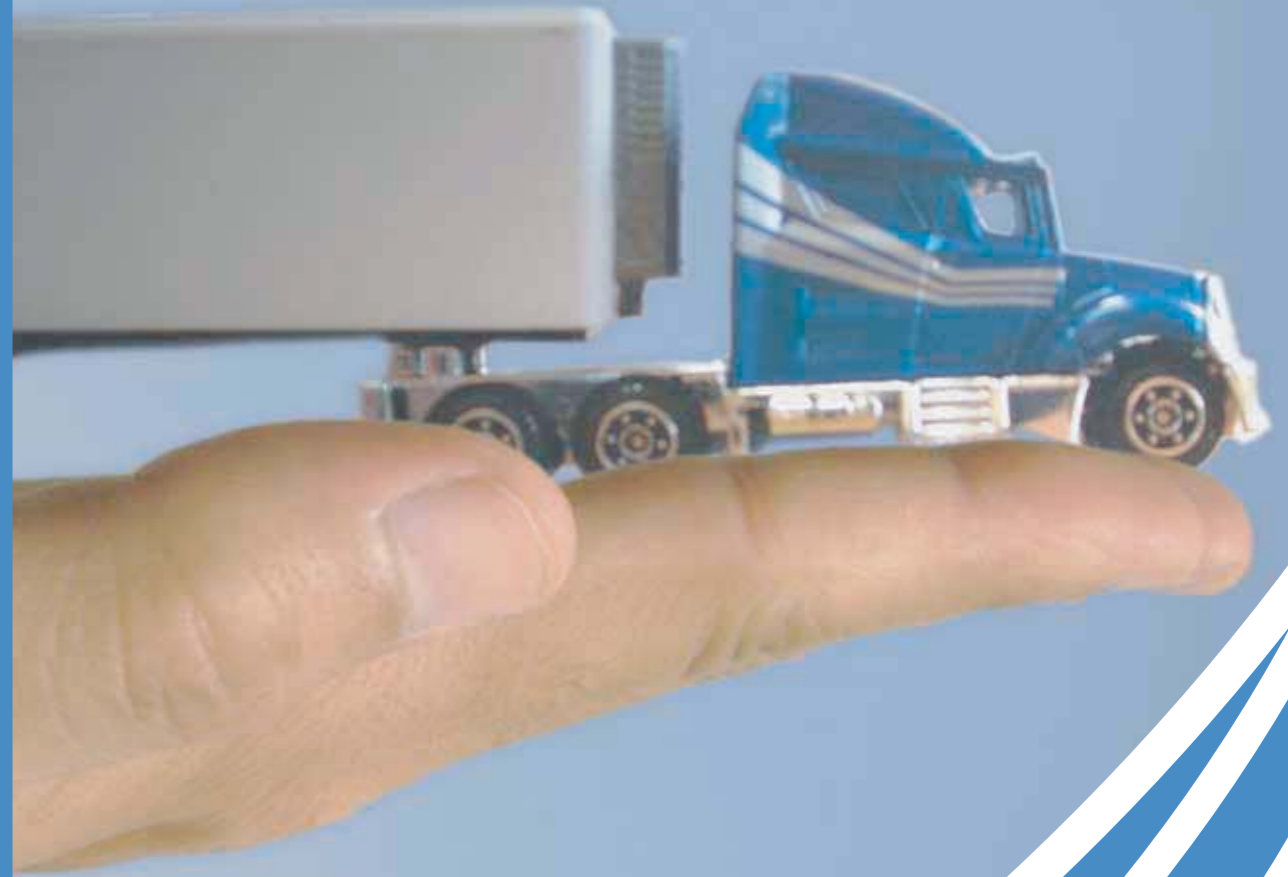


DRIVING THE WHEELS OF INDUSTRY

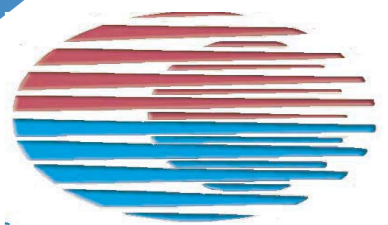


## Web Based GPS Tracking & Fleet Management Solution

ExtremTrac Technology Co.,Ltd 8F of NO.13 MEILING Road, Road Survey Organization of FuTian.ShenZhen.  
Tel: +86 755 28708746, Fax: +86 75 6157 5918

ExtremTrac Technology Co.,Ltd South America Nuestras Oficinas Principales: Calle Los Almendrones,  
Residencias Esparta Suite, Oficina PB-7, Costa Azul, Edo. Nueva Esparta, Venezuela.  
Tel: +58 295 - 2671849 Fax: +58 295 - 2671789

E-mail: [info@extremtrac.com](mailto:info@extremtrac.com)  
Website: [www.extremtrac.com](http://www.extremtrac.com)



**ExtremTrac**



The ExtremTrac EX1000 is a prehensive, powerful mobile resource management platform designed for logistics companies and vehicle security. An internet based GPS fleet tracking and management software application, a web viewer dedicated to the management of units fleets (land, air & sea), Its finality is to bring a complete information, detailed and actualized of different nature about the units (cars, ships, people, and others). It is available both as a hosted solution at [extremtrac.com](http://extremtrac.com) or as of a partner's server or customers' own website tracking access. With the [extremtrac.com](http://extremtrac.com) Server Subscription you can add database read access, user interface translation and corporate branding as an option. The EX1000 support ExtremTrac GPS/GPRS/SMS vehicle trackers, personal trackers, asset/equipment trackers, etc

## MORE FEATURES

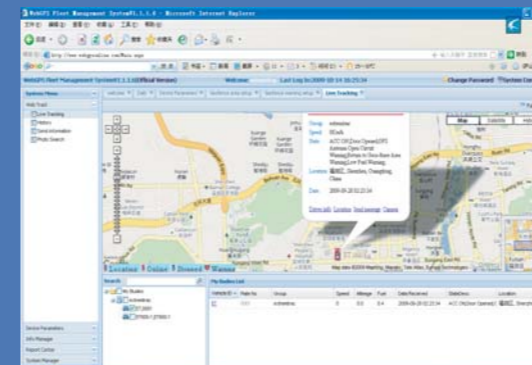
Planning and scheduling  
At the heart of mobile resource management are the planning and scheduling and 2 way voice communication between drivers and monitor office. The 2 way solution can also be carried out by messaging with the mobile data terminal installed in-cab. In this way the platform incorporates job allocation (i.e. delivery, service call, etc.) to a suitable mobile resource, job sequences, and associated times (time of arrival, job performance and exit). The planned routes/jobs can be synchronised with the mobile handheld or in-cab screens, allowing the driver to view the assigned jobs/routes and provide real time feedback. A real time view of actual vs. plan provides the operator with the ability to view execution status, identify and dynamically respond.



Using internet browser to realize the online operation of real time AVL vehicle, boat, asset tracking and workforce management, remote monitoring and control, real time map refreshing, zoom in and zoom out, distance calculating, route analysis etc. EX1000 also supports mobile devices as PDA, smart phone to access for real time mobile tracking solution. Its latest version allow users to have 3D map view as well.

Map solutions: EX1000 allows to add the SHAPE format local maps, utilizes the latest map driver and Net environment, it supports Google Earth, Google maps, MS Virtual Earth maps, etc, with English and Spanish language available.

Operation requirement: A Personal Computer able to open a navigator Web (Internet Explorer 5.5 or higher, Mozilla Firefox 2.0 or higher), is able to open the viewer normally, if you have good bandwidths, the speed of the connection will be better.



Difference tracker icon selection for people, vehicle, equipment boats, airplane.  
To access EX1000 put [www.webgpstracking.net](http://www.webgpstracking.net) in your internet browser, go to GPS Tracking Access Enter login and password:  
User name: **extremtrac**  
Password: **9999**

## KEY FEATURES

- Visualize all the units (cars, ships, people, and others) with high vasatile precision maps.
- Show the route history of each unit with a backup of three months and a year in cd (under order).
- Vehicle/trackers report database
- ACC monitoring, fix time, fix distance reporting, intelligent moving/stopping report
- Image monitoring/fuel consumption monitoring/temperature monitoring
- Geofencing.
- Online control of vehicles ( door lock/unlock/engine cut/power off)
- Fleet online dispatch
- Visualize the units with it corresponding geografic data.
- Route Trace and scheduling.
- Report analysis ( daily, weekly, monthly )
- Able to build markers to visualize them in the viewer.

