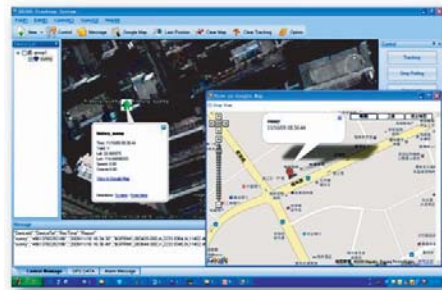


# ExtremTrac<sup>®</sup>

## GPS Technology



## Mini-ET700

The Mini-ET700 is a tiny sized yet powerful GPS, GSM/GPRS car tracking device for fleet management, car security. Built-in 800Mah battery for long lasting operation without external power, built-in memory for data logging of 100,000 waypoints, Harsh-weather and shock resistant PCB design, remote engine cut, geofence, support ExtremTrac PC based software EX300 and EX1000 web based software. ( 2.2 x 5.2 x 7cm) With its compact and small size, easy installation inside the vehicle. U-blox GPS module and Philip GPRS module.

### FUNCTIONALITY

#### 1. Real time GPS report

- fixed time report
- Vehicle ID
- fixed time/distance report
- Mileage report
- Vehicle status report:
- Ignition on/off report
- Report upon request
- Intelligent vehicle moving report
- Intelligent vehicle stopping report
- Enforced GPRS report update
- Keep Alive GPRS connection
- GPS storage when GPRS disconnected, and forward when connection regains.
- Back up positioning by GSM base station when GPS is not available
- Support GPRS and SMS

#### 2. Alarm & Alarm Report:

- Emergency report
- Car jacking alarm
- SOS Cry for help rescue report
- Automatic arming
- SIM card taking off alarm ( new )
- Main power disconnecting alarm
- Low voltage alarm
- Vehicle moving alarm in arming mode
- Geo-fencing alarm report
- GPS antenna cut report
- GPS antenna connect report
- Speeding report
- Geofence alarm report

#### 3. Control:

- Immobilization of vehicle engine
- Position update
- Cut engine fuel
- Recover engine fuel
- Recover alarm
- Clear logged data
- Re-set tracker

#### 4. Remote & Onside Setting:

- Set time interval
- Set distance report
- Set speed limit
- Set data logging time interval
- Data-log upload numbers
- Data-log time periodical upload
- Set Geofence

### TECHNICAL PARAMETERS

Working voltage: 8 ~ 36V/DC

Power source anti-ties: ≥ 80V

Working electric current:

Average 110mA @ DC 12V

Sleeping < 45mA @DC 12V

Unit size: 2.2 x 5.2 x 7cm

Net weight: 0.12kg ( Aluminium alloy )

Frequency: 2 Tri-band Siemens GPRS/GSM:

I/O: Inputs: 6 inputs ( with 3 additional optional)

Outputs: 3

GPS performance: Tracks up to 16 satellites of

GPS Position accuracy < 5 meters

Warm start time < 38 sec., average

Hot start time: < 8 seconds ,average

Store temperature: -25 C ~ + 85 C

Working-humidity: 25 C ~ + 85 C

Working temperature: -10 C ~ + 70 C

Backup battery: Nickel-hydrogen 4.8V/DC 800 mAh

Data port: RS-232 series port

+ 5V/DC, 500mA (max) power supply