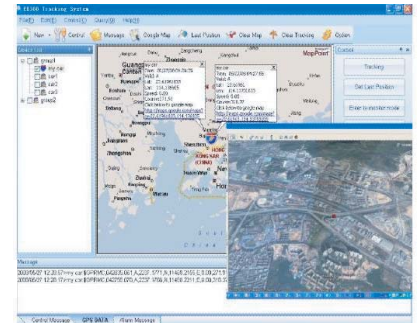


# ExtremTrac®

## GPS Technology



## ET-700C

The ET700C [Text Format Protocol Version] is a small yet powerful GPS, GSM/GPRS vehicle tracking device for professional fleet management, AVL services, working with ExtremTrac EX300 PC based tracking software, supporting MS MapPoint, Google maps, Google earth, Optional mobile data terminal / handset phone for 2 way voice/ message communications. Built-in 800Mah battery built-in memory for data log of 30,000 waypoints. It is designed for almost any vehicles. With compact and small size, (Cigarette box size), easy hide and installation in the vehicle. U-blox GPS module and Siemens GPRS module.

### FUNCTIONALITY

- GPS real time tracking
- Support TCP/UDP modes
- Support GPRS/SMS communication
- Remote server command and SMS configuration
- Siemens module ( MC55, MC56, MC39 )
- Report by unit ID, speed, locaiton, direction, time, etc
- All in one tracking software and control modem
- Dial out police for emergency rescue
- Geo-fencing
- Voice monitoring
- Remote power cut control
- Remote door open/close
- Remote open/close GPRS
- Remote oil cut control
- Remote set speed limte
- Remote/on side set Geofence
- Lower voltage alert
- Ultrasonic alarm

- Vibration alarm
- Main power disconnection
- Geofence alarm
- Drag alarm
- Stolen alarm
- Carjacking alarm
- Door open alarm
- Vehicle igniting
- Over speeding
- PC program direct upload the data logger message
- Moving alert ( from stopping)

### TECHNICAL PARAMETERS

Working voltage: 8 ~ 36V/DC

Power source anti- ties: ≥ 80V

Working electric current:

Average 110mA @ DC 12V

Sleeping < 45mA @DC 12V

Unit size: 88 × 62.5 × 32.5 mm ( L x W x H )

Net weight : 0.26kg ( Aluminium alloy )

Frequency: 2 Tri-band Siemens GPRS/GSM:

I/O: Inputs: 6 inputs ( with 3 additional optional)

Outputs: 3

GPS performance: Tracks up to 16 satellites of

GPS Position accuracy < 15 meters

CEP without SA Cold start time < 48 sec.

Warm start time < 38 sec., average

Hot start time: < 8 seconds ,average

Data transfer modes: GPRS (TCP)

SMS UDP (buffered with 4 positions per SMS)

Store temperature: -25 C ~ + 85 C

Working humidity: 25 C ~ + 85 C

Working temperature: -10 C ~ + 70 C

Backup battery: Nickel-hydrogen 4.8V/DC 800 mAh

Data port: RS-232 series port

+ 5V/DC, 500mA (max) power supply



# ET-700

## PACKAGE:



Main Unit



Mobile Data Display (Optional)



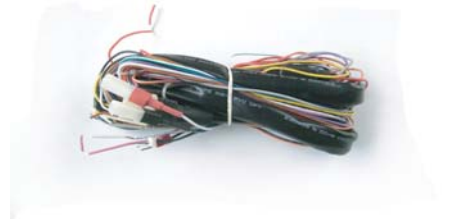
Handset Phone (Optional)



Camera (Optional)



GPS/GPRS Antenna



Main Harness



PC Setup & Program Cable



Cut Relay



Handset Phone & Camera Cable



Microphone



SOS Button



PC Set Up Program & Manual